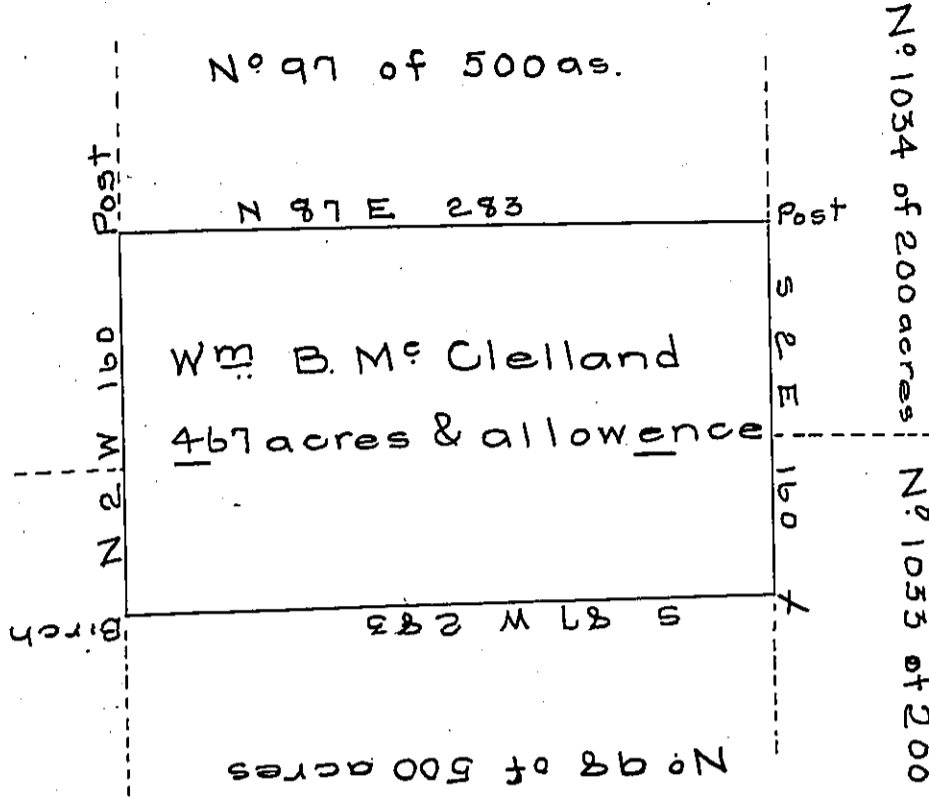


N<sup>o</sup> 1045 N<sup>o</sup> 1046 of 200 acres  
according to the General Draft  
of the 5<sup>th</sup> Donation District



N<sup>o</sup> 1034 of 200 acres  
N<sup>o</sup> 1033 of 200 as.

Situate in Millcreek township Mercer County in the fifth Donation District according to the General Plan of the said District being lot N<sup>o</sup> 100 of 250 acres supposed to be an undrawn lot containing one hundred and sixty seven acres and allowance of six per cent for roads &c. Surveyed May 24<sup>th</sup> A.D. 1850 for William M<sup>o</sup> Clelland in pursuence of his actual settlement and improvement thereon.

By me John Findley D.S.

To John Laporte Esq.  
Surveyor General

IN TESTIMONY that the above is a copy of the original remaining on file in the Department of Internal Affairs of Pennsylvania, made conformably to an Act of Assembly approved the 16th day of February, 1833, I have hereunto set my Hand and caused the Seal of said Department to be affixed at Harrisburg, this sixteenth day of April 1906

*Loae R. Brown*  
Secretary of Internal Affairs.